

AUTUMN
2024

INTRODUCING

Hamamelis x intermedia 'Rubin'

*Spicy, citrus scented blooms to ignite your
winter and spring garden - see page 14*



Welcome

As the glowing days of autumn approach nature offers a crescendo of copper, crimson and ochre tones. After which many plants slumber and the garden can become sparse. There are, however, still many interesting and unusual plants which further amplify your garden over the colder months.

So, make yourself a cuppa and enjoy selecting and planning to help your garden look its best throughout the colder months.

The Hayloft team xxx



HAYLOFT'S NO-QUIBBLE GUARANTEE

Your plants are all selected by hand in our nursery, supplied with care notes and delivered in recyclable packaging by courier. If, for any reason, you are not happy with your plants, our friendly team will be happy to replace them or refund the cost...

and that's a promise.



HOW YOUR PLANTS ARE SUPPLIED

POTTED PLANTS



Ready to plant on arrival, the pot size is indicated in each relevant plant's description.

BARE ROOTS



Bare roots should be soaked in water for at least one hour prior to planting.

BULBS



We deliver flowering size bulbs so you can rely on them to reach their optimum performance.

HOW TO ORDER

- **ONLINE** hayloft.co.uk
- **ORDER LINE** 01386 554440
8am to 6pm, Mon-Fri
9am to 5pm, Sat-Sun
- **POST**
Order form on page 35
- **CUSTOMER CARE**
9am to 5pm, Monday to Saturday
customer@hayloft.co.uk
- **KEEP IN TOUCH**
Follow our social media pages



NEW NEW TO HAYLOFT FOR 2024

RHS AWARD OF GARDEN MERIT



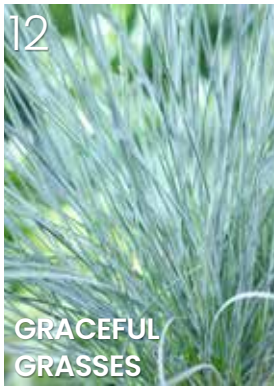
CONTENTS

4



AWESOME AUTUMN

12



GRACEFUL GRASSES

14



WONDEROUS WINTER

22



HEAVENLY HELLEBORES

24



GORGEOUS EVERGREENS

26



SCINTILLATING SPRING

32



RESPLENDENT ROSA

SEE OUR FULL RANGE OF BULBS ONLINE **CHOOSE THREE BUNDLES AND ONLY PAY FOR TWO**



NEW

Hydrangea paniculata 'Groundbreaker'

The first ground covering, low growing variety

Astounding, dwarf shrub for carpets of pink and white flowers from July to November. Alluring to pollinators and perfect in a vase. Exciting newcomer – thrives in pots or open ground, spreading joy wherever it grows.

Prefers moist, well-drained soil in full sun or partial shade. Fully hardy, deciduous shrub. H&S: 40-50cm. Delivered from September in 12cm pots.

K39184 1 £18

K39185 3 £34

K39186 5 £48

Flowers for 100 days

★ Trustpilot ★★★★★ **Excellent**

PETER JOYCE

"The plants arrived in really good condition and not squashed or knocked about; and they were more developed and bigger than I had anticipated"

MEG

Easy website to search, select & pay. Great customer service... Goods received all excellent quality, they're doing well. The hanging baskets are flowering profusely"

SUSAN ARMSTRONG

"Impressed with my first experience with Hayloft. I must admit I was concerned but took heart in the good reviews... arrived well packaged and in good condition"

AWESOME AUTUMN

Plants to accompany the crunch of fallen leaves and the flaming colour palette around you – perfect for accenting the best, most bountiful assets of the season



Resplendent Rudbeckia Collection (Black-eyed Susan)

A trio of beaming, daisy-like blooms give glowing impact

Generous, sunny-hued flowers from July to October over bushy, gap-filling foliage. Energetic plants – perfect for a container and a border, where they naturalise for warm, welcoming colour year on year. A pollinator favourite and excellent cut flower.

Prefer moist, well-drained soil in full sun or partial shade. Hardy, herbaceous perennials. Delivered from October in 9cm pots.

A	K23451	3	fulgida var. sullivanti 'Goldsturm'	H&S: 60cm	£18
B	K09349	3	triloba 'Prairie Glow'	H: 1.2m S: 70cm	£18
C	K42235	3	fulgida 'Viette's Little Suzy'	H&S: 60cm	£24
	K42237	3	(1 of each)		£21
	K42238	9	(3 of each)		£38
	K42239	15	(5 of each)		£54



NEW

Agapanthus 'Black Jack' (African Lily)

'Plant of the Year' at the prestigious 2023 RHS Chelsea Flower Show

Sought after by pollinators, florists and anyone who sees these inky, adventurous blooms. Flowers emerge on strong stems, above strap-shaped foliage, from July to August each year. Perfect in the ground, in containers or cut for your vases.

Prefers well-drained soil in full sun. Hardy, evergreen perennial. H&S: 60cm. Delivered from August 2025 in 9cm pots.

K37745	1	£15
K36890	3	£34
K34383	5	£48



NEW

Mahonia 'Volcano' (Oregon Grape)

Glowing, lava-like floral torches to warm the autumnal garden

Fiery, exciting new colours from this unusual variety which blooms September to November over robust, spine-free, bushy foliage. Leaves emerge bronze, taking on verdant, silvery tones as they mature. Less imposing than many so perfect for smaller spaces.

Prefers moist, well-drained soil in full sun or partial shade. Hardy, evergreen shrub. H: 1.2m S: 1m. Delivered from September in 2 litre pots.

K42324	1	£25
K42325	3	£58
K42326	5	£88



Glowing *Helenium autumnale*

(Sneezeweed)

Prairie perfect blooms for a splash of panache from summer to autumn

Brilliant and bountiful trio with blooms from July through to September. Hot colours reflect the sun's summer rays whilst co-ordinating with autumnal foliage – creating harmony in the garden and in your home when cut for a vase.

Prefer fertile, well-drained soil in full sun. Fully hardy, herbaceous perennials. Delivered from October in 9cm pots.

A	K42241	3	'Ranchera'	H&S: 40-50cm	£24
B	K42244	3	'Sombbrero'	H&S: 50cm	£24
C	K04619	3	'Can Can'	H: 80cm S: 60cm	£24
	K42252	3	(1 of each)		£24
	K42253	9	(3 of each)		£54
	K42254	15	(5 of each)		£78

Cosmos *atrosanguineus* 'Cherry Chocolate'

(Chocolate Cosmos)

Breathtaking new arrival launched at RHS Chelsea 2024!

A rare, exciting new cosmos with rich petals, chocolate scent and contrasting golden pollen – irresistible to humans and pollinators. Large, 7cm blooms appear successionaly from mid-summer into the autumn. Ideal for smaller spaces and containers, perfect for cutting to enjoy indoors.

Prefers well-drained soil in full sun. Hardy, herbaceous perennial. H: 45cm S: 30cm. Delivered within 14 days in 9cm pots.

K41738	1	£14
K41739	3	£21
K41740	5	£34



Miscanthus sinensis 'Lady in Red'

(Eulalia)

Exceptional beauty reaches new levels of sophistication

Rare, resplendent foliage from March to November - crowned by fluffy, feathery plumes though August to October. Vibrant stems sway adding colourful structure and movement to borders, rockeries and containers.

Prefers well-drained soil in full sun. A hardy, herbaceous perennial. H: 1.2m S: 1m. Delivered from November as bare roots.

K42328	1	£18
K42329	3	£38
K42330	5	£58



NEW

AWESOME AUTUMN



Cheery Pyracantha coccinea (Firethorn)

Robust, reliable wonder - full of flowers and berries

Versatile and vibrant, specially bred to have less prickly thorns! Pollinator friendly flowers emerge over spring and summer, followed by small, brightly coloured berries in autumn, offering a more accessible feast for birds and other wildlife.

Prefer moist, well-drained soil in full sun or partial shade. Fully hardy and hardy, evergreen shrubs. Delivered from September in 9cm pots.

NEW

A	K42298	3	'Sunny Star' H: 3m S: 2m	£22
B	K25084	3	'Red Star' H&S: 4m	£22
C	K42301	3	'Orange Star' H: 3m S: 2m	£22
	K42303	3	(1 of each)	£22
	K42304	9	(3 of each)	£48
	K42305	15	(5 of each)	£70

Cephalanthus occidentalis

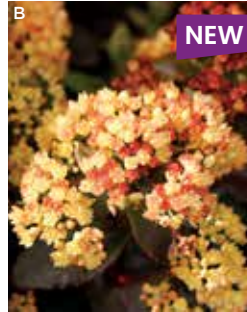
(Button Bush)

Honey-like fragrance from cute looking blooms

Clusters of sweetly scented, fuzzy, globe-like flowers from July to September - drawing in butterflies, bees and admiring eyes. Each bloom matures into a golden-brown sphere, offering sustenance to other wildlife. Foliage is glossy, with red stems and turns golden orange in autumn.

Prefers moist soil in full sun. Hardy, deciduous shrub. H&S: 2.5m. Delivered within 14 days in 9cm pots.

K20136	1	£16
K03816	3	£24
K08741	5	£38



Luscious Hylotelephium (Sedum)

Succulent, colour-changing leaves and starry clusters of blooms

Long-lasting, tongue-shaped foliage in rich colours is retained for most, if not all, of the year. From July to October strong stems bear large clusters of star-shaped flowers, adding vibrant and intriguing colour. Fabulous for pollinators, drought tolerant and easy-going.

Prefer well-drained soil in full sun or partial shade. Fully hardy perennials. Delivered within 14 days in 9cm pots.

A	K16613	3	'Thunderhead'	H&S: 60-75cm	£21
B	K42290	3	'Peach Pearls'	H&S: 40cm	£21
C	K42287	3	'Back in Black'	H&S: 60-70cm	£21
	K42292	3	(1 of each)		£21
	K42293	9	(3 of each)		£44
	K42294	15	(5 of each)		£64



Radiant Heliopsis helianthoides (False Sunflower)

NEW

Nine months of fantastic foliage topped by sunny blooms

Up to 3 months of flowers from July to September in hot, lava-like shades. Blooms emerge over patterned leaves with captivating silvery or bronze tones.

Pollinator friendly, ideal for a vase and happy in pots, rockeries or open ground.

Prefer well-drained soil in full sun. Hardy, herbaceous perennials. H: 40-45cm S: 35-40cm. Delivered within 14 days in 9cm pots.

A	K28802	3	var. <i>scabra</i> 'Luna Roja'	£24
B	K42259	3	'Double Sunstruck'	£24
C	K42256	3	'Orange Marble'	£24
	K42261	3	(1 of each)	£24
	K42262	9	(3 of each)	£54
	K42263	15	(5 of each)	£78

Allium sphaerocephalon

(Drumstick Allium)

Opulent, oval allium flowers right to the end of summer

Unusually shaped alliums compiled from clusters of small flowers, visually akin to wild teasel heads. Ideal for creating nodding swathes on long, strong stems in rockeries, containers or open ground from June to August. Pollinator friendly, drought tolerant beauties.

Prefer well-drained soil in full sun. Hardy, bulbous perennials. H: 90cm S: 10cm. Delivered within 14 days as bulbs.

K14439	30	£12
K09505	60	£14
K12137	90	£16





Theatrical *Symphotrichum novi-belgii* (Aster)

Dramatic autumnal colour from daisy-like blooms

Perfect for that late garden glow from summer to the end of autumn. A colourful collaboration which forms a glorious chorus and an invaluable feast for pollinators. Plant in tiers or line up in pots for an avenue of dazzling blooms.

Prefer moist, well-drained soil in full sun or partial shade. Hardy, herbaceous perennials. Delivered within 14 days in 1 litre pots.

A	K30884	3	'Fellowship' H: 1m S: 75cm	£24
B	K35791	3	'White Ladies' H: 1m S: 80cm	£24
C	K28589	3	'Purple Dome' H&S: 60cm	£24
	K31385	3	(1 of each)	£24
	K37056	9	(3 of each)	£58
	K35247	15	(5 of each)	£88

Perovskia atriplicifolia 'Prime Time'

(Russian Sage)

Aromatic foliage and generous blooms

Best known for their incredibly long flowering season, lasting from July to October. Colourful stems draw in pollinators and make a wonderful inclusion in a vase - releasing herby scent whenever the lacy, silver-green foliage is brushed past. Drought tolerant and great for pots, rockeries or borders.

Prefers well-drained soil in full sun. Hardy, deciduous shrub. H&S: 50cm. Delivered within 14 days in 9cm pots.

K33389	1	£15
K37805	3	£21
K36097	5	£30



Asphodeline lutea

(Asphodel, King's Spear)

Handsome, scented, and stunning dry garden saviour

Blue-tinted, grass-like foliage makes superb groundcover from April to November. Star-shaped, fragrant blooms appear from May to July; visually unusual and an exciting inclusion in salads (with a mild, slightly sweet flavour). Perfect for borders, gravel gardens and containers.

Prefers well-drained soil in full sun. H: 1.5m S: 60cm. Drought tolerant, hardy, herbaceous perennial. Delivered within 14 days in 9cm pots.

K03535	1	£14
K03869	3	£22
K26314	5	£28



Jazy Eryngium (Eryngo)

Fun-loving forms bring architectural interest indoors and out

Thistle-like, spiky blooms emerge from June and remain into early autumn offering cool, striking colours – perfect for rockeries, dry gardens and containers. Drought tolerant once established, loved by pollinators, especially bees, and perfect for a vase in your home.

Prefer well-drained soil in full sun. Hardy, herbaceous perennials. Delivered within 14 days in 9cm pots.

A	K18992	3	'Pen Blue' H&S: 60cm	£28
B	K10956	3	planum H: 90cm S: 60cm	£21
C	K31072	3	'Magical White Lagoon' H: 80cm S: 40cm	£28
	K42450	3	(1 of each)	£24
	K42451	9	(3 of each)	£54
	K42452	15	(5 of each)	£75

GRACEFUL GRASSES

Perfect for Prairie planting – offering sophistication, movement and a relaxing swish to patios, pots, rockeries and borders. Delivered within 14 days in 9cm pots – unless stated otherwise.



Whispering Miscanthus sinensis (Eulalia)

Magical softness with silvery movement

Gracefully arching foliage and silky plumes of tassel-like flowers from August to October give height, movement and sensual sound. Statuesque, sophisticated plants, happy in containers or open ground. Drought tolerant once established, with seedheads providing intrigue over winter.

Prefer well-drained soil in full sun. Hardy, herbaceous perennials. Delivered within 14 days in 1 litre and 9cm pots.

A	K37246	1	'Kaskadee'	H: 1.8m S: 1.5m	£14
	K27382	3	'Kaskadee'		£24
	K41773	5	'Kaskadee'		£34
B	K01320	1	'Morning Light'	H: 1.8m S: 1.2m	£14
	K10866	3	'Morning Light'		£24
	K18216	5	'Morning Light'		£34
C	K33103	1	'Boucle'	H: 1.1m S: 1m	£14
	K38028	3	'Boucle'		£24
	K37127	5	'Boucle'		£34
	K42571	3	(1 of each)		£24
	K42572	9	(3 of each)		£48
	K42573	15	(5 of each)		£78



Festuca glauca 'Elijah Blue' (Blue Fescue)

Fine, evergreen foliage and fluffy flowers from summer to autumn. Prefers well-drained soil in full sun. Hardy, evergreen perennial. H&S: 30cm.
K02589 1 £13 K13733 3 £20 K269355 £28

Miscanthus sinensis 'Flamingo' (Eulalia)

Grassy fronds and summer blooms. Prefers moist, well-drained soil in full sun. H: 1.8m S: 1m. Hardy, herbaceous perennial. 11cm pot.
K42706 1 £18 K42707 3 £28 K42708 5 £44

Cortaderia selloana 'Tiny Pampa' (Pampas Grass)

Compact evergreen with feathery plumes August to September. Prefers well-drained soil in full sun. Hardy perennial. H&S: 60cm.
K02227 1 £15 K00337 3 £28 K18955 5 £44



Festuca glauca 'Sunrise'

(Blue Fescue)

Airy grass with bright flowers in June and July. Drought tolerant once established. Prefers well-drained soil in full sun. H: 70cm. S: 30cm. Hardy, evergreen perennial.

K24756	1	£14
K01146	3	£22
K22379	5	£32



Imperata cylindrica 'Red Baron' (Japanese Blood Grass)

Foliage March to October. Silvery blooms July to August. Prefers well-drained soil in sun or partial shade. Hardy, herbaceous perennial. H&S: 45cm.
K07227 1 £12 K02154 3 £21 K23858 5 £30

Pennisetum alopecuroides 'Little Bunny' (Fountain Grass)

Fountains of foliage and fluffy summer flowers. Prefers well-drained soil in full sun. Hardy, herbaceous perennial. H&S: 50-60cm.
K31298 1 £12 K31132 3 £21 K26449 5 £30

Panicum virgatum 'Heavy Metal' (Switch Grass)

Upright, steely leaves have hazy panicles August to September. Prefers well-drained soil in full sun. H: 1.2m S: 1m. Hardy, herbaceous perennial.
K32221 1 £14 K32728 3 £24 K33374 5 £34

WONDEROUS WINTER

Excellent additions to the garden at a sparser time of year – colourful, scented and incredibly robust ways to lift the spirits and warm the soul



Uplifting Hamamelis (Witch Hazel)

Perfumed, tassel-like blooms and fantastic autumn colour

Sure to make your spirits soar when spicy, citrus scented, vibrant flowers are borne successively from December to March on leafless branches. Verdant foliage follows and is retained until autumn, when it shifts and changes for a fiery display.

Prefer moist, well-drained soil in full sun or partial shade. Hardy, deciduous shrubs. H&S: 4m. Delivered from November in 9cm pots.

A	K42306	1	x <i>intermedia</i> 'Rubin'	£22
B	K42309	1	<i>vernalis</i> 'Amanda'	£22
C	K32125	1	x <i>intermedia</i> 'Orange Beauty'	£22
	K42312	3	(1 of each)	£38
	K42313	9	(3 of each)	£96
	K42314	15	(5 of each)	£148



Vivacious Clematis *cirrrosa*

(Virgin's Bower)

Prolific winter bloomers brighten up your garden and home

Pretty, open, bell-shaped blooms successionaly from November to March. Scrambling stems clamber up trellis, trees and pergolas for fantastic impact. Two have intense, citrusy fragrance.

Prefer moist, well-drained soil in full sun or partial shade. Hardy, evergreen and semi-evergreen climbing shrubs. Delivered within 14 days in 9cm pots.

A	K22187	3	var. purpurascens 'Freckles'	H: 4m S: 1m	£24
B	K07354	3	'Christmas Surprise'	H: 2.5m S: 1m	£30
C	K02322	3	'Wisley Cream'	H: 4m S: 1.5m	£24
	K42332	3	(1 of each)		£28
	K42333	9	(3 of each)		£58
	K42334	15	(5 of each)		£88

Frosted Fragrance

Scented winter beauties to enhance and enchant

Trio of exceptionally fragrant shrubs, flowering successionaly from December to April. A mix of climbing, deciduous and semi-evergreen shrubs with sweet and spicy scents – attractive to pollinators and perfect in a vase. Plant in containers or open ground where perfume and blooms can be most appreciated.

Prefer moist, well-drained soil in full sun and partial shade. Hardy shrubs. Delivered within 14 days in 9cm pots.

A	K02653	3	Chimonanthus praecox	H: 4m S: 2.5m	£26
B	K34763	3	Lonicera x purpusii 'Winter Beauty'	H: 2m S: 2.5m	£18
C	K38552	3	Daphne bholua 'Mary Rose'	H: 4m S: 1.5m	£36
	K42453	3	(1 of each)		£26
	K42454	9	(3 of each)		£68
	K42455	15	(5 of each)		£98





Charismatic Loropetalum chinense (Chinese Fringe Flower)

Tasseled flowers, full of character, accompany intense, evergreen foliage

Shrubs which pack a punch! Dark, dramatic leaves are accompanied by intriguing blooms successionaly from February to May. Flowers spread sweet, alluring perfume as they grow. Great for a vase, container or gap in the border.

Prefer moist, humus-rich, well-drained soil in sun or partial shade. Hardy and half-hardy, evergreen shrubs. Delivered within 14 days in 9cm pots.

A	K21194	3	var. <i>rubrum</i> 'Black Pearl' H&S: 1.5m	£28
B	K00641	3	var. <i>rubrum</i> 'Fire Dance' H&S: 1m	£24
C	K45626	3	'Iceberry' H&S: 1.5m	£28
	K42350	3	(1 of each)	£28
	K42351	9	(3 of each)	£54
	K42352	15	(5 of each)	£78



Perfect Ilex Pairing (Holly)

Delicate lady needs her prince for a display to set your heart singing

Evergreen female holly and male holly make a beautiful couple, with one offering an abundance of dazzling berries over winter. Perfect for festive decorations inside and out! White flowers in spring and glossy leaves all year crown the collaboration.

Prefer moist, well-drained soil. Hardy and fully hardy shrubs. Delivered from September in 9cm pots.

A	K42466	1	'Jingle Berry' H: 1m S: 80cm	£16
	K42467	3	'Jingle Berry'	£24
	K42468	5	'Jingle Berry'	£34
B	K12593	1	'Blue Prince' H: 4m S: 2.5m	£14
	K05458	3	'Blue Prince'	£20
	K09235	5	'Blue Prince'	£28
	K42483	2	(1 of each)	£18
	K42484	6	(3 of each)	£35
	K42485	10	(5 of each)	£50

Sarcococca hookeriana 'Winter Gem' (Sweet Box)

Glossy foliage accompanied by four months of delicious perfume

A gardener's favourite, perfect in pots or open ground.

Foliage is enrobed in tasseled flowers from December to March, followed by glossy berries. Blooms offer sweet vanilla fragrance which amplifies on sunny days.

Prefers moist, well-drained soil in full sun or partial shade. Hardy, evergreen shrub.

H&S: 1m. Delivered within 14 days in 9cm pots.

K18615	1	£14
K24705	3	£24
K10883	5	£34



Winter-flowering Camellia sasanqua

Bright abundant blooms add seasonal cheer

Precious and exciting varieties, one of which, 'Kanjiro', is scented. Blooming sequentially from October to February - adding 5 months of generous colour to open ground, containers and vases. Glossy, gap-filling foliage brings year round interest.

Prefer moist, well-drained soil in full sun or partial shade. Hardy, evergreen shrubs. Delivered from November in 8cm pots.

A	K13834	3	'Kanjiro'	H&S: 3m	£30
B	K15047	3	'Yuletide'	H: 3m S: 2.5m	£30
C	K42471	3	'Chantal'	H: 2m S: 1m	£30
	K42480	3	(1 of each)		£30
	K42481	9	(3 of each)		£68
	K42482	15	(5 of each)		£98



Sociable Cercis (Chinese Redbud)

Elevate your outdoor space with nature's elegance

Relatively compact shrubs or trees, perfect for smaller spaces and happy in a container too. Vibrant blooms in springtime, followed by attractive foliage retained until November.

Prefer moist, well-drained soil in sun or partial shade. Fully hardy and hardy deciduous trees. Delivered within 14 days in 9cm pots.

A	K33429	1	chinensis 'Avondale'	H: 4m S: 2.5m	£18
B	K35429	1	chinensis 'Shirobana'	H&S: 3m	£18
C	K01245	1	siliquastrum	H&S: 10m	£14
	K41876	3	(1 of each)		£28
	K41877	9	(3 of each)		£62
	K41878	15	(5 of each)		£98

Coronilla valentina subsp. glauca 'Citrina' (Bastard Senna)

Sunny hues and sweet perfume from winter into spring

Bright, pea-like, lemon scented blooms from December to April stimulate the senses and add joy to the garden during colder months. Perfect for early pollinators with beautiful, glaucous foliage held all year. Happy in containers or open ground.

Prefers well-drained soil in full sun. Hardy, evergreen shrub. H&S: 90cm. Delivered from April in 9cm pots.

K08349	1	£14
K01178	3	£24
K15313	5	£34





Crocus Blackberry & Vanilla Sorbet

A fabulous February fanfare

A collaborative, naturalising combination of fruity hues highlighted by golden stamens. A fabulous way to start a colour revival, with flowers appearing from February to March - crossing the seasons to light up the garden.

Prefer well-drained soil in full sun. Hardy, cormous perennials. H: 15cm S: 10cm. Delivered within 14 days as bulbs.

K24427	20	£14
K18614	40	£18
K10630	60	£24



Jacobinia pauciflora (Brazilian Fuchsia)

Vibrant, exotic addition to your home and garden

Wonderfully sunny and appealing award winner.

A tropical beauty to bring some sunshine indoors when it flowers from October to March. Perfect for a container which can be moved outside when temperatures climb above 10°C or ideal for a conservatory all year round.

Prefers well-drained soil in partial shade. Sub-tropical, evergreen shrub. H&S: 60cm. Delivered within 14 days in 9cm pots.

K30118	1	£14
K30460	3	£21
K35119	5	£34

Cornus sanguinea 'Anny's Winter Orange' (Dogwood)

*A powerhouse of
colour and form*

One of the best cultivars for vigour and colour. Flowers in June and July, ornamental berries and colourful foliage in autumn, preceded by vibrant stems in winter. A spectacular all-rounder, adding fire and warmth in the sparsest season.

Prefers moist, well-drained soil in sun or partial shade. Hardy, deciduous shrub. H&S: 2.3-2.5m. Delivered within 14 days in 9cm pot.

K33066 1 £14
K32894 3 £21
K33648 5 £28



Woodland Naturalisers

Elegant, archetypal shade-lovers

Enjoy the magical impact of a woodland planting area with these national favourites – English bluebells, aconites and snowdrops. Flowers arrive in succession from January to May and plants readily naturalise, spreading their uplifting joy along with delicate perfume.

Prefer a partially shaded spot in humus rich, moist, well-drained soil. Fully hardy and hardy bulbous perennials. S: 10cm. Delivered within 14 days as bulbs.

A K42065	30	<i>Eranthis hyemalis</i>	H: 10cm	£15
B K17680	15	<i>Hyacinthoides non-scripta</i>	H: 30cm	£12
C K42062	30	<i>Galanthus nivalis</i>	H: 20cm	£18
K33047	75	(30 <i>Eranthis</i> , 15 <i>Hyacinthoides</i> and 30 <i>Galanthus</i>)		£24
K33741	150	(60 <i>Eranthis</i> , 30 <i>Hyacinthoides</i> and 60 <i>Galanthus</i>)		£38
K37535	225	(90 <i>Eranthis</i> , 45 <i>Hyacinthoides</i> and 90 <i>Galanthus</i>)		£54



*Intensely
fragrant blooms
cross winter
into spring*

Garrya elliptica 'James Roof'

(Silk Tassel tree)

Enjoy an impressive, evergreen display from this unique shrub

Intriguing, suspended, silky catkins up to 20cm long emerge from December to March, held against glossy, wavy-edged foliage. Fabulous sculptural impact in your planted spaces. Happy in containers or open ground.

Prefers well-drained soil in full sun or partial shade. Hardy, evergreen shrub or tree. H&S: 4m. Delivered from April in 9cm pots.

K05987	1	£18
K24098	3	£34
K25801	5	£48

Edgeworthia chrysantha

(Paperbush)

Unusual and exciting winter and spring flowering shrub

Woolly, silver-green buds appear on bare branches and explode into sweet, clove scented flowers from January to April. Dark, simple leaves follow from March to September - ideal for the mid-tier of a border or a strategic container.

Prefers moist, well-drained soil in full sun or partial shade. Hardy, deciduous shrub. H&S: 1.5m. Delivered from November in 9cm pots.

K17407	1	£16
K24033	3	£34
K26201	5	£48

HEAVENLY HELLEBORUS ORIENTALIS

Commonly known as Lenten Rose. Flowers exceptionally long-lasting, from January to May, deepening in colour as blooms mature. All prefer moist, well-drained soil in partial to full shade. Fully hardy evergreen perennials with H&S: 35–45cm. Delivered from November in 9cm pots unless stated otherwise.



Dazzling Helleborus x hybridus 'Double Ellen'

Generously ruffled enduring blooms atop deep green foliage

Frilly, fantastically marked double blooms add colour, form and flair to a shady nook needing some pizzazz. Large, palmate foliage creates further interest throughout the year.

Prefer moist, well-drained soil in partial to full shade. Fully hardy, semi-evergreen perennials.

A	K25807	3	'Picotee'	£24
B	K20488	3	'Pink'	£24
C	K00729	3	'Red'	£24
D	K15021	3	'White'	£24
	K42264	4	(1 of each)	£30
	K42265	12	(3 of each)	£64
	K42266	20	(5 of each)	£84



'Single Apricot'

Peachy perfection in your winter and spring garden; each petal a work of art.

K42267 1 £14 K42268 3 £24 K42269 5 £36



'Anemone Slaty Blue'

Steely tones accented by a zesty corona contrast with dark, alluringly marked foliage.

K42270 1 £14 K42271 3 £24 K42272 5 £36



'Double Yellow'

Dramatic double blooms brighten and lift a shady corner with golden sunny hues.

K42273 1 £14 K42274 3 £24 K42275 5 £36



NEW

'Double Black'

A generous and sculptural variety with the most intensely dark double blooms. A central, bright corona creates beautiful and eye-catching contrast. A dramatic and delightful way to brighten up a shady nook.

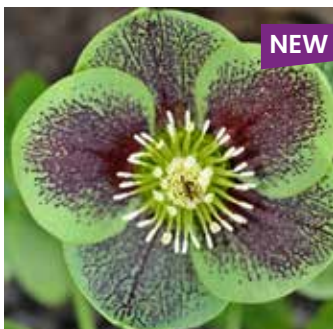
K42280 1 £14
K42281 3 £24
K42282 5 £36



'Single Pink Dark Spotted'

Heart-shaped petals with dappled markings add a burst of colour.

K42276 1 £14 K42277 3 £24 K42278 5 £36



'Single Green Spotted'

Curvaceous petals dappled by dark, alluring splotches.

K01439 1 £14 K00660 3 £24 K25178 5 £36



'Double Aubergine White Edge'

Rich, decadent blooms with ruffled interiors and frost-kissed edges.

K42283 1 £14 K42284 3 £24 K42285 5 £36

GORGEOUS EVERGREENS

Special beauties to bring sculptural foliage, verdant form and scented blooms just when you and your garden will appreciate a 'pick-me-up'



Elevating Evergreen Ferns

Wonderous fronds for every corner

Happy in dappled sun or shady places – highlighting their adaptability, reliability and beauty. Easy-going plants which combine for an alluring foliage display.

Prefer moist, well-drained soil in partial to full shade. Fully hardy and hardy, perennials. Delivered from October in 9cm pots.



A K42433	3	Asplenium scolopendrium	H: 75cm S: 60cm	£22
B K30175	3	Polystichum setiferum	H: 1.2m S: 90cm	£22
C K29112	3	Blechnum spicant	H: 50cm S: 45cm	£22
K42435	3	(1 of each)		£22
K42436	9	(3 of each)		£44
K42437	15	(5 of each)		£58



Marvellous Erysimum (Perennial Wallflower)

Showy, shifting and dramatic hues

Dependable, delightful garden favourites which commence blooming as early as March and continue until September. Enduring flowers come with wonderful perfume, likened to violets and honey, which is a magnet for pollinators as well as people.

Prefer well-drained soil in full sun or partial shade. Hardy and half-hardy, evergreen perennials. Delivered from December in 9cm pots.

A K35894	3	'Winter Passion'	H&S: 50-60cm	£21
B K38048	3	'Winter Light'	H&S: 30-40cm	£21
C K42354	3	'Winter Spice'	H&S: 50-60cm	£21
K42456	3	(1 of each)		£21
K42457	9	(3 of each)		£42
K42458	15	(5 of each)		£58



Trachelospermum jasminoides

(Star Jasmine)

Evergreen, colour changing leaves crowned by intensely fragrant blooms

One of the most perfumed plants for your garden. An exotic-looking climber, with sweetly scented, star-shaped blooms from June to August. Foliage is glossy, evergreen and self-twining; often turning bronze then red in autumn and winter.

Prefers a sheltered spot with well-drained soil in full sun or partial shade. A hardy, evergreen climbing shrub.

H&S: 8m. Delivered within 14 days in 2L pots.

K17267	1	£20
K33306	2	£34
K29599	3	£44



Acacia decurrens var. dealbata

(Blue Wattle)

Yellow pom poms give a fantastically floriferous explosion

Magical evergreen shrub with heavenly scented blooms from January to April. A bright, brilliant way to light up your winter and spring garden, providing sustenance to early pollinators whilst attracting many admiring glances.

Prefers well-drained soil in full sun. H: 12m S: 4m.

Half-hardy, evergreen shrub. Delivered within 14 days in 9cm pots.

K10998	1	£14
K06092	3	£26
K26309	5	£40

SCINTILLATING SPRING

Familiar favourites along with unusual and exciting varieties – plant them now in preparation for scent and colour in spring



Spectacularly Scented Philadelphus (Mock Orange)

Delicately dramatic and incredibly robust shrubs

Generous, fragrant flowers emerge successively from May to July, offering heady notes of jasmine and orange blossom. Ideal for focal containers and as cut stems in a vase. Perfect in the border, especially near a path or seating area for maximum impact.

Prefer moist, well-drained soil in sun or partial shade. Fully hardy and hardy, deciduous shrubs. Delivered within 14 days in 9cm pots.

A	K00603	3	'Pearls of Perfume'	H:1.2m S: 60cm	£24
B	K41780	3	'Petite Perfume Pink'	H:1.5m S: 2m	£26
C	K01004	3	'Belle Etoile'	H:1.5m S: 2.5m	£21
	K42359	3	(1 of each)		£24
	K42360	9	(3 of each)		£48
	K42361	15	(5 of each)		£68

Polygala chamaebuxus 'Grandiflora'

(Milkwort)

Fruity fragrance with rich, intense colour

Dainty beauty with vibrant flowers and deliciously sweet, tutti-frutti scent in spring and summer. An unusual, adaptable evergreen – exceptionally cold tolerant, drought tolerant and ideal for rock gardens, gravel borders and containers.

Prefers well-drained soil in full sun or partial shade. Fully hardy, evergreen shrub. H: 10cm S: 50cm. Delivered from November in 9cm pots.

K04064	1	£15
K04716	3	£20
K22578	5	£26



Native and naturalising fragrant carpets



Galium odoratum

(Sweet Woodruff)

Clusters of highly-scented, starry flowers

Brighten a shady place with lush carpets of sweetly scented foliage from March to October. Further enhanced by dainty blooms from April to July. Fantastic for pollinators, with exceptional weed-suppressing qualities and a naturalising habit.

Prefers moist, well-drained soil in shade or partial shade. Fully hardy, herbaceous perennial.

H: 30cm S: 90cm. Delivered from October in 9cm pots.

K09023	1	£13
K21505	3	£18
K01193	5	£24

Forsythia x intermedia 'Mini Gold'

Buttery-yellow blooms with subtle, narcissi-like scent

Dwarf variety - perfect for a sunny balcony or patio pot as well as a border. Eager blooms arrive before the foliage in March to April and are excellent for a vase. Foliage turns sumptuous shades of golden yellow during autumn.

Prefers well-drained soil in full sun or partial shade. Hardy, deciduous shrub. H&S: 1.2m. Delivered within 14 days in 9cm pots.

K14134	1	£12
K03091	3	£18
K14522	5	£28



Fluttering Aquilegia 'Earlybird' (Columbine)

Flurries of our favourite perennials

Compact variety of this archetypal cottage garden delight - ideal for smaller spaces, containers and open ground. Neat mounds of pretty, fern-like foliage from April to August, topped by intriguing blooms in May and June to delight you, pollinators and passers-by.

Prefer moist, well-drained soil in full sun or partial shade. Fully hardy, herbaceous perennials. H&S: 30cm. Delivered within 14 days in 9cm pots.

A	K35588	3	'Purple White'	£18
B	K36851	3	'White'	£18
C	K36193	3	'Blue White'	£18
	K34212	3	(1 of each)	£18
	K37234	9	(3 of each)	£36
	K35662	15	(5 of each)	£45



Myriad Primula (Candelabra Primrose)

Striking drumstick blooms in rainbow shades

Vibrant colour and form – ideal for shadier spots. Delightful candelabra blooms produce flowers successively from March to June. A feast for pollinators, ideal for decorous impact in pots, around ponds, underneath shrubs and in rockeries.

Prefer moist, humus-rich soil in sun or partial shade. Fully hardy and hardy perennials. Delivered from November in 9cm pots.

A	K21657	3	bulleyana	H&S: 60cm	£18
B	K26377	3	capitata subsp. mooreana	H&S: 30cm	£18
C	K21377	3	japonica 'Millers Crimson'	H: 60cm S: 45cm	£18
D	K07605	3	japonica 'Apple Blossom'	H: 60 S: 45cm	£18
E	K30984	3	japonica 'Alba'	H&S: 45cm	£18
	K13985	5	(1 of each)		£24
	K05501	15	(3 of each)		£46
	K36266	25	(5 of each)		£68



Hebe 'Verdi Crème'

(Shrubby Veronica)

Variegated and vibrant little darling

Select British breeding brings you a compact, eye-catching shrub – ideal for pots or sheltered borders. Alongside evergreen, tricolour foliage racemes of blooms appear during May and June, enticing in pollinators. Perfect for colour and interest all year.

Prefers well-drained soil in partial shade. Half-hardy, evergreen shrub. H&S: 50cm. Delivered from September in 9cm pots.

K39680	1	£16
K39682	3	£28
K39683	5	£38



Detonating Peonia *lactiflora* (Chinese Peony)

NEW

Mesmerising explosions of pink petals cross spring into summer

Best planted as bare roots in cooler months so they establish before warmer weather. Bomb type blooms in May and June with tight, double ruffles to the centre. Two varieties have alluringly sweet perfume, and all are perfect for a vase.

Prefer moist, well-drained soil in full sun or partial shade. Hardy, deciduous shrubs. H: 80-90cm S: 60cm. Delivered from November as bare roots.

A	K42336	3	'She's My Star'	£64
B	K42339	3	'Top Hat'	£38
C	K42342	3	'Chiffon Parfait'	£46
	K42344	3	(1 of each)	£48
	K42345	9	(3 of each)	£98
	K42346	15	(5 of each)	£148

Pulsatilla vulgaris 'Fairy Dreams'

(Pasque Flower)

*Generous, jubilant
and richly hued*

Stunning variant with regal tones and opulent, double blooms in April and May each year. Flowers sit above finely cut foliage – held from March to August for gap-filling interest. Ideal for pots and gravel gardens, drought tolerant once established.

Prefers well-drained soil in full sun. Fully hardy, herbaceous perennial. H&S: 30cm. Delivered within 14 days in 9cm pots.

K38681	1	£18
K38684	3	£30
K38687	5	£44





Astonishing Aubrieta gracilis

(Rock Cross)

Rich and intensely vibrant froths of flowers

Sumptuous mix, intensified by the carpet of foliage beneath. Great cascading over walls or planted in crevices. Flowers throughout April to May, lending a perfect pop of colour and welcoming pollinators. Eternally popular and easy-going beauties.

Prefer well-drained soil in full sun or partial shade. Hardy, evergreen perennials. H: 15cm S: 50cm. Delivered from September in 9cm pots.

A	K34940	3	'Katie Blue'	£18
B	K35747	3	'Katie Red Shades'	£18
C	K32996	3	'Katie Purple Shades'	£18
	K37022	3	(1 of each)	£18
	K36328	9	(3 of each)	£38
	K34344	15	(5 of each)	£54



Delicious Daphne

Pretty, petite blooms with intensely sweet, citrusy fragrance

Dainty four-petaled flowers emerge successionally from January to April, filling your garden with incredible perfume above rich, dark foliage. Fantastic for pollinators and happy in pots or open ground, locate where they are both smelt and seen!

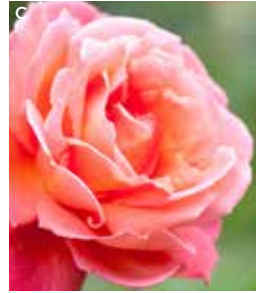
Prefer moist, well-drained soil in full sun or partial shade. H: 1.5m S: 1m. Hardy, evergreen shrubs. Delivered from September in 9cm pots.

A	K35203	3	x <i>transatlantica</i>	£42
			'Perfume Princess'	
B	K42319	3	'Perfume Princess White'	£42
	K42321	2	(1 of each)	£34
	K42322	6	(3 of each)	£78
	K42323	10	(5 of each)	£120

NEW

RESPLENDENT ROSA

Elegant blooms and sumptuous perfume from June to September. Hardy shrubs for full sun or partial shade and rich, moist, well-drained soil. Delivered from November as bare roots unless stated otherwise.



Repeating Rosa

Varied, vivacious beauties with fabulous Tea rose fragrance

Trio of repeat bloomers with successions of flowers from June to September in unusual, exciting and intense shades. Great for a vase and happy to grow in containers or open ground. Generous and joyous summer and autumn archetypes.

Prefer rich, well-drained soil in full sun or partial shade. Hardy, deciduous shrubs.

A	K31434	1	'Buff Beauty'	H&S: 1.5m	£16
	K32563	3	'Buff Beauty'		£24
B	K35154	1	'Waltz Time'	H&S: 90cm	£16
	K36637	3	'Waltz Time'		£24
C	K36880	1	'Troika'	H: 90cm S: 60cm	£16
	K34136	3	'Troika'		£24
	K42459	3	(1 of each)		£24
	K42460	9	(3 of each)		£48
	K42461	15	(5 of each)		£68



Rosa 'You're My Everything'

Floribunda type with a subtle, sophisticated perfume and exceptional disease resistance.

H&S: 1m.

K42487 1 £18 K42488 3 £36



Rosa 'Compassion'

Robust, repeat flowering climber with fully double blooms up to 10cm across and rich, sweet perfume. H: 3m S: 2.5m.

K32269 1 £16 K31379 3 £24



Rosa 'Black Baccara'

Hybrid Tea, with classical looks and rich perfume – akin to ylang ylang with spicy black pepper. Repeat flowering habit. H: 90cm S: 45cm.

K37404 1 £16 K33642 3 £24



NEW

Rosa 'My Lovely Dad'

Repeat flowering Hybrid Tea with pretty perfume and unusual shifting colours. Excellent for cutting too. H: 1m S: 75cm.

K42490 1 £18 K42491 3 £36

**Rosa 'Hot Chocolate'**

Robust and radiant Floribunda bloom. Cup shaped, repeating blooms with subtle, sweet perfume. H: 90cm S: 45cm.

K34207 1 £16 K04663 3 £24



NEW

Rosa 'Peach Melba'

A delicious looking, sweetly fragrant feast for your eyes. A more compact climber. Ideal for containers and smaller spaces. H: 2m S: 1.5m.

K42591 1 £18 K42592 3 £36

**Rosa alpina 'Cutie Pie'**

Compact, colourful and perfect as a focal point in a pot or planted 'en masse' to line pathways and borders. Scented, bicoloured blooms from June to August. H: 15cm S: 30cm. Delivered within 14 days in 12cm pots.

K42426 1 £14
K42427 3 £24
K42428 5 £38



NEW

Rosa 'Blush Noisette'

Traditional 'noisette' climber or shrub. Beautiful foliage and repeating, semi-double flowers with musky perfume. H: 3m S: 2m.

K42496 1 £18 K42497 3 £36



NEW

Rosa 'Ebb Tide'

Intensely purple blooms with a spicy clove and citrus fragrance. Repeat flowering Floribunda type. H&S: 1.2m.

K42493 1 £18 K42494 3 £36



NEW

Rosa 'Agatha Christie'

Sophisticated, climbing rose with a neat habit. Classical spirals of velvety petals emerge from pointed buds. H: 4.5m S: 3m

K42499 1 £18 K42500 3 £36

*Starry spring and
summer blooms
with irresistibly
sweet perfume*

NEW



Deutzia x hybrida 'Tokyo Delight'

Bicoloured, scented blooms on open, arching branches

An exciting new development offering compact, gracefully arching stems and an open, airy habit. Pretty clusters of pollinator friendly blooms from May to June eagerly spread sweet perfume across the garden.

Simple, elegant foliage emerges in spring and remains until the first frosts. Ideal for smaller spaces.

Prefers moist, well-drained soil in full sun or partial shade. Fully hardy, deciduous shrub.

H&S: 70-75cm. Delivered from July 2025 in 9cm pots.

K42356 1 £15

K42357 3 £28

K42358 5 £42

NEW

*Dependable
evergreen with red
shoots, tight pink
buds and shiny
berries to captivate
all year*



Viburnum tinus 'Rock 'n' Rolla' (Laurustinus)

A year-round performer, sure to impress

Striking evergreen with young, red foliage which matures to glossy green. Bright buds open revealing fragrant blooms from December to April. Shiny, ornamental berries are retained throughout summer. Fantastic for pollinators and other wildlife.

Prefers moist, well-drained soil in sun or partial shade. Hardy, evergreen shrub.

H: 1.2m S: 70cm. Delivered from September in 9cm pots.

K42136 1 £18

K42137 3 £28

K42138 5 £38

hayloft.co.uk | 01386 554440